



MOOI MGENI TRANSFER SCHEME PHASE 2 (MMTS-2)

Construction of the Spring Grove Dam & Appurtenant Works

[DEA Reference Number: 12/12/20/220]



MONTHLY ECO REPORT : July 2014



ENVIRONMENTAL AND SOCIAL CONSULTANTS

P.O. BOX 1673
SUNNINGHILL
2157

Offices 4 & 5
23 Jan Hofmeyer Road
Westville
3629

Tel : 031 266 3884
Fax : 031 266 5287
Email: info@nemai.co.za

EXECUTIVE SUMMARY

Nemai Consulting was appointed as the independent Environmental Control Officer (ECO) by the Trans-Caledon Tunnel Authority (TCTA) for the Mooi-Mgeni Transfer Scheme Phase 2 (MMTS-2) project. This document serves as the monthly ECO Report for July 2014.

Regulatory compliance monitoring was primarily completed in September 2013, as the construction phase for the dam had been concluded. During the ensuing 12-months defects liability period which ends in October 2014 the ECO monitoring will focus on the Contractor's performance in terms of the rehabilitation of the site in relation to the conditions of the Record of Decision, as well as the measures contained in the Environmental Management Plans and Rehabilitation Programme.

The following rehabilitated areas were inspected during the monitoring event:

- Left and right bank at dam wall – Zone 1;
- Left and right bank at the fish barrier, as well as access road – Zone 3;
- Ferret Lane;
- Road embankment;
- Routes 11 and 13 – Zone 6;
- Vaalekop South Road;
- General shore line area; and
- D146.

A 97% score was achieved in terms of performance and compliance against the following:

- Relevant conditions of RoD; and
- Environmental Management Plans.

The main issues identified during the monitoring event include the following:

- General management of alien invasive plant species and weeds within shoreline area of state land. It is acknowledged that this function forms part of the dam operator's duties.
- Various areas with little or no growth. It is not expected that adequate growth will be achieved until the wet season has commenced. Where necessary, problematic areas will need to be added to a snag list and these sites will be revisited by the ECO in March 2015.
- Spoil material left in riparian zone of watercourse on upstream left bank at Lower Loteni culvert.

The following matters are regarded as environmental management priorities that require appropriate attention, or issues that need to be clarified with the project team:

- Phase 1 of baseline study for the rehabilitation of wetlands and biodiversity offsets has been completed. The specialist is currently drafting the implementation plan (phase 2 of the study), which will be completed by 10 October 2014. An Authorities Meeting has been scheduled for 10 September 2010 and an Offsets Work Group Meeting will be held later that month.
- Management guidelines to be included in the Resource Management Plan for the management of the dam and state land.
- Site visit to be arranged at appropriate time with the EMC members to show them the areas that have been rehabilitated to allow for signing off in terms of the RoD condition.
- Rehabilitated areas to be compared with pre-construction state – photographs from the pre-construction survey to be used in this regard.
- Monitor sediment contribution from areas affected by construction activities.
- Maintain firebreaks on state land in consultation with adjoining landowners and relevant fire protection associations. It is noted that the state land surrounding the dam has been handed over to DWA, who have delegated operation to Umgeni Water. This responsibility now lies with the operator. Details of firebreaks have been included in the Operation and Maintenance Manual and the accountability now lies with Umgeni Water.
- Query regarding cover depth of topsoil that was placed at old camp site area at Lower Loteni culverts.
- Compare structure of watercourse affected by construction activities undertaken along Route 11 with pre-construction state. Noted that current movement of cattle is contributing to the destabilisation of the banks.
- Prevent illegal access to state land and repair various breaches in fence. This is an operational matter that needs to be attended to by the Department of Water and Sanitation and Umgeni Water.
- Rehabilitation of access road created along Route 11.
- Remove concrete wall at compensation pipe at fish barrier.
- Minimise siltation of watercourse during remaining works at fish barrier.

TITLE AND APPROVAL PAGE

Project name: **Mooi Mgeni Transfer Scheme Phase 2 - Construction of the Spring Grove Dam & Appurtenant Works**

Report Title: **Monthly Environmental Control Officer Report**

Authors: **D Henning, N Naidoo**

DEA reference no.: **12/12/20/220**

Status of report: **Draft**

Compliance Report No: **38**

Date of issue: **13 August 2014**

PSP: Nema Consulting

Approved for PSP by:

N Naidoo

Project Manager

TCTA: Client

Approved for TCTA by:

K Naidoo

Environmental Manager

TABLE OF CONTENTS

EXECUTIVE SUMMARY	2
TITLE AND APPROVAL PAGE	4
TABLE OF CONTENTS	5
LIST OF ACRONYMS & ABBREVIATIONS	7
DEFINITIONS	8
1 INTRODUCTION	10
2 ECO MONITORING APPROACH	11
3 OVERVIEW OF REHABILITATION	13
3.1 Rehabilitation and Reinstatement Programme	13
3.2 Contractor's Method Statements	13
3.3 Rehabilitation Areas and Activities for the Monitoring Period	14
4 REHABILITATION PERFORMANCE	17
4.1 ECO Monitoring Checklist	17
4.2 Environmental Issues	17
4.3 Pending Environmental Management Considerations	21
5 ISSUES AND COMPLAINTS	23

LIST OF TABLES

TABLE 1:	SUMMARY OF MONTHLY ECO MONITORING CHECKLIST CATEGORIES: JULY 2014	17
----------	---	----

LIST OF FIGURES

FIGURE 1:	ENVIRONMENTAL GOVERNANCE ARRANGEMENTS: LINES OF ACCOUNTABILITY	10
FIGURE 2:	LEFT BANK AT DAM WALL	14
FIGURE 3:	FISH BARRIER	14
FIGURE 4:	FERRET LANE	15
FIGURE 5:	ROAD EMBANKMENT	15
FIGURE 6:	ROUTE 11	16
FIGURE 7:	VAALEKOP SOUTH ROAD	16
FIGURE 8:	GENERAL SHORELINE AREA	16
FIGURE 9:	BARE AREA – ROUTE 11	18
FIGURE 10:	BARE AREA - UPSTREAM LEFT BANK AT DAM WALL	18
FIGURE 11:	BARE AREAS – FERRET LANE	19
FIGURE 12:	BARE AREA – DOWNSTREAM OF FISH BARRIER ON RIGHT BANK	19
FIGURE 13:	BARE AND ERODED AREAS – FISH BARRIER ON RIGHT BANK	20
FIGURE 14:	BREACH IN FENCE	22
FIGURE 15:	REHABILITATION OF SECOND ACCESS ROAD (ROUTE 11)	22

LIST OF APPENDICES

APPENDIX A :	REHABILITATION ZONES – CONTRACTOR'S METHOD STATEMENT	24
APPENDIX B :	REHABILITATION SCHEDULE	27
APPENDIX C :	EXTRACT FROM ISSUES AND COMPLAINTS REGISTER	30

LIST OF ACRONYMS & ABBREVIATIONS

DEA	Department of Environmental Affairs
ECO	Environmental Control Officer
EO	Environmental Officer
EMP	Environmental Management Plan
EM	Environmental Monitor
EMC	Environmental Monitoring Committee
MMTS-2	Mooi Mgeni Transfer Scheme Phase 2
TCTA	Trans-Caledon Tunnel Authority
RoD	Record of Decision

DEFINITIONS

Auditing

An 'environmental' audit is a methodical examination (including tests, checks, and confirmation) of environmental procedures and practices with the view of verifying whether they comply with internal policies, accepted practices and legal requirements

Environment

The surroundings in which humans exist and which comprise:

- The land, water and atmosphere of the earth.
- Micro-organisms, plant and animal life.
- Any part or combination of a) and b) and the interrelationships among and between them.
- The physical, chemical, aesthetic and cultural properties and conditions of the foregoing that can influence human health and well-being.

Environmental Aspect

Those components of the company's activities, products and services that are likely to interact with the environment.

Environmental Feature

Elements and attributes of the biophysical, economic and social environment.

Environmental Impact

The change to the environment resulting from an environmental aspect (an activity) on the environment, whether desirable or undesirable. An impact may be the direct or indirect consequence of an activity.

Environmental Management Plan (EMP)

A detailed plan of action prepared to ensure that recommendations for enhancing positive impacts and/or limiting or preventing negative environmental impacts are implemented during the life-cycle of a project.

Environmental Objective

Overall environmental goal pertaining to the management of environmental features.

Environmental Target

Performance requirement that arises from the environmental objectives and that needs to be set and met in order to achieve those objectives.

Hazardous Waste

Any waste that contains organic or inorganic elements or compounds that may, owing to the inherent physical, chemical or toxicological characteristics of that waste, have a detrimental impact on health and the environment

Monitoring

'Compliance' monitoring is a continuous and systematic process to ensure that the conditions in the Record of Decision (RoD) Environmental Management Plan (EMP) are being adhered to.

Pollution

Any change in the environment caused by substances, radioactive or other waves, or noise, odours, dust or heat, emitted from any activity, including the storage or treatment of waste or substances, construction and the provision of services, whether engaged in by any person or an organ of state, where that change has an adverse effect on human health or well-being or on the composition, resilience and productivity of natural or managed ecosystems, or on materials useful to people, or will have such an effect in the future.

Record of Decision

The written statement from the relevant environmental authority in terms of the Environment Conservation Act (Act 73 of 1989), with or without conditions, that records its approval of a planned activity and the implementation thereof and the mitigating measures required to prevent or reduce the effects of environmental impacts during the life of a contract.

Rehabilitation

The return of a disturbed area to a state, which approximates the state (where possible), which it was before disruption.

1 INTRODUCTION

Nemai Consulting was appointed as the independent Environmental Control Officer (ECO) by the Trans-Caledon Tunnel Authority (TCTA) for the Mooi-Mgeni Transfer Scheme Phase 2 (MMTS-2) project.

The ECO's functions in terms of environmental compliance monitoring are to systematically monitor the processes and activities required for the implementation of each Environmental Management Plans (EMPs) and the conditions in the Record of Decision (RoD) (refer to environmental governance arrangements in **Figure 1**).

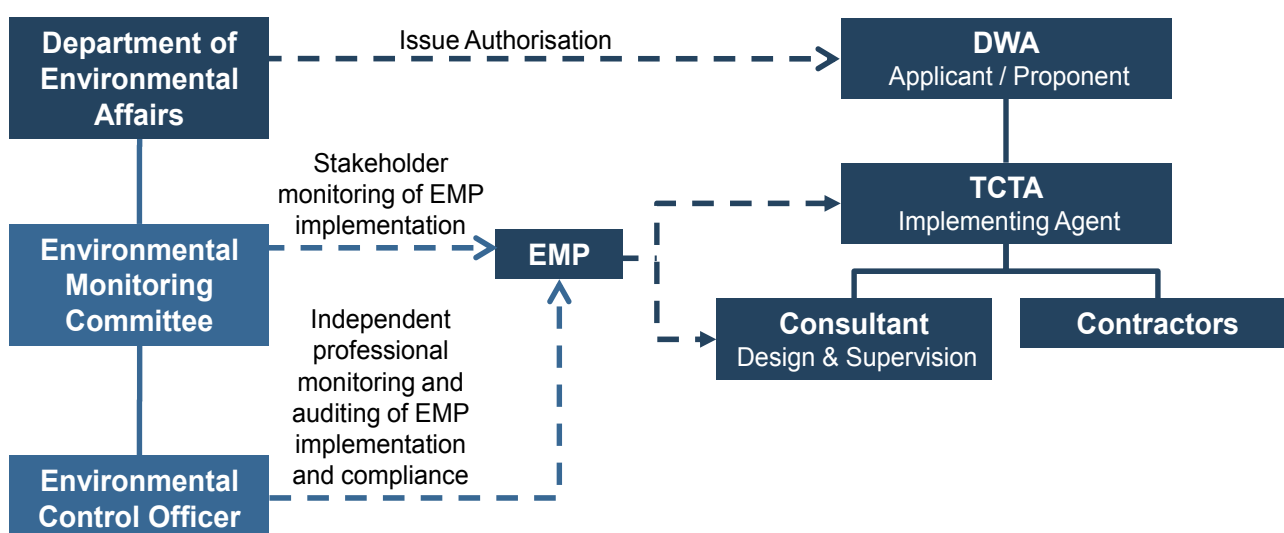


Figure 1: Environmental Governance Arrangements: Lines of Accountability

Regulatory compliance monitoring was primarily completed in September 2013, as the construction phase for the dam had been concluded. During the ensuing 12-months defects liability period which ends in October 2014 the ECO monitoring will focus on the Contractor's performance in terms of the rehabilitation of the site in relation to the conditions of the RoD, as well as the relevant measures contained in the EMPs and Rehabilitation Programme.

This document serves as the monthly ECO Report for July 2014.

2 ECO MONITORING APPROACH

As mentioned, in terms of the project life-cycle the current focus of the **monthly** ECO monitoring is on the rehabilitation of the construction site. This includes checking performance and compliance against the following:

- Relevant conditions of RoD for the construction of Spring Grove Dam and Appurtenant Works;
- EMPs and associated conditions of approval; and
- Rehabilitation Programme.

The Monthly ECO monitoring reports are submitted to TCTA, the Environmental Monitoring Committee (EMC), and ultimately DEA. The monthly ECO monitoring includes the following:

- Once a month site inspections;
- Checking environmental administrative provisions (e.g. documentation, files, registers) related to rehabilitation;
- Checking complaints related to rehabilitation;
- Interviewing the Environmental Manager, Environmental Monitor (EM) and Environmental Officer (EO) (as required); and
- Completing a Monitoring Checklist.

The following Conformance Scores, based on the level of compliance against provisions for rehabilitation, are allocated to the monitoring items in the checklist:

CONFORMANCE SCORES	DESCRIPTION
1	Task not achieved
2	Task 20% complete
3	Task 50% complete
4	Task 80 % complete
5	Task 100% completed in accordance with the EMP

Where non-conformance to the RoD conditions and EMP mitigation measures is encountered (i.e. COMFORMANCE SCORE < 5), the significance of the associated Impact is recorded based on the following guidelines):

IMPACT SCORES	IMPACT
1	Low – mitigation not needed/ mitigation measures to be maintained
2	Medium – mitigation should be considered
3	High – mitigation compulsory

The identified non-conformances and related impacts are also rated based on the following **Penalty Scores**:

PENALTY SCORES	DESCRIPTION
0	Not Applicable / Impact or Non-Conformance occurred in area of low Environmental Significance
1	Moderate – Impact/Non-Conformance occurred in area of moderate Environmental Significance (<i>1% Deduction from total conformance score</i>)
2	High – Impact/Non-Conformance occurred in area of high Environmental Significance (<i>3% Deduction from total conformance score</i>)
3	Very High – Impact/Non-Conformance Occurred in area of very high Environmental Significance (<i>5% Deduction from total conformance score</i>)

The overall compliance score is based on:

- No of items scored for the monitoring event;
- The highest conformance score for the monitoring event;
- The actual conformance score for the monitoring event;
- The conformance percentage for the monitoring event (%);
- Total Penalty Deductions (%); and
- Total Conformance Score Including Penalty Deductions (%).

The following targets have been set for measuring the performance of rehabilitation measures (where applicable):

- ✓ 80% coverage to be achieved for areas that have been grassed or hydro-seeded;
- ✓ No bare patches exceeding 0.25m² in an area of 1m x 1m; and
- ✓ In the case of sodding, acceptable cover shall mean that the entire areas shall be covered with live grass at the end of any period not less than three months after sodding.

3 OVERVIEW OF REHABILITATION

3.1 Rehabilitation and Reinstatement Programme

A Rehabilitation and Reinstatement Programme was developed (dated May 2013), which makes provision for the following:

- Roles and Responsibilities;
- Alien Vegetation Removal and Monitoring Plan;
- Weed Control During Construction;
- Rehabilitation and Monitoring Plan;
- Areas identified for Reinstatement and Rehabilitation;
- Miscellaneous Areas used by the Contractor During the Contract;
- Maintenance and Monitoring of Rehabilitated Areas.

A provisional schedule was also prepared for the rehabilitation activities, which is included in **Appendix A**.

3.2 Contractor's Method Statements

The Contractor has prepared the following method statements (dated September 2013):

- De-establishment of main site; and
- Rehabilitation Plan for Spring Grove Dam and Appurtenant Works.

According to the above-mentioned Rehabilitation Plan, the areas to be reinstated and rehabilitated are split into the following zones (refer to maps contained in **Appendix B**):

- Zone 1 – left and right bank downstream of dam wall;
- Zone 2 – canteen area, stores, precast yard, waste area and laydown area;
- Zone 3 – fish barrier – left and right bank;
- Zone 4 – Little Mooi – left and right bank, and borrow area;
- Zone 5 – Lower Loteni Culverts – up- and downstream sides, site camp; and
- Zone 6 – all small areas along Route 13 and Route 11 that need attention.

Rehabilitation methods are proposed based on the steepness of the slopes.

3.3 Rehabilitation Areas and Activities for the Monitoring Period

The following main rehabilitated areas were inspected during the monitoring event:

- Left (**Figure 2**) and right bank at dam wall – Zone 1;
- Left and right bank at the fish barrier, as well as access road (**Figure 3**) – Zone 3;
- Ferret Lane (**Figure 4**);
- Road embankment (**Figure 5**);
- Routes 11 (**Figure 6**) and 13 – Zone 6;
- Vaalekop South Road (**Figure 7**);
- General shore line area (**Figure 8**); and
- D146.



Figure 2: Left bank at dam wall



Figure 3: Fish barrier



Figure 4: Ferret Lane



Figure 5: Road Embankment



Figure 6: Route 11



Figure 7: Vaalekop South Road



Figure 8: General shoreline area

4 REHABILITATION PERFORMANCE

An overview of the rehabilitation performance during the monthly monitoring period is provided in the sub-sections to follow.

4.1 ECO Monitoring Checklist

The checklist contains conditions of the RoD and measures from the EMPs related to rehabilitation against which compliance was scored. The results of the monthly ECO Monitoring Checklist for the current monitoring period are provided below.

Table 1: Summary of Monthly ECO Monitoring Checklist categories: July 2014

Monitoring Category	Conformance Score (%)
Environmental Authorisation	99
Administration	100
Environmental Education and Awareness	100
Water Quality	80
Vegetation	60
Rehabilitation	100
TOTAL	97%

It should be noted that without the weighting of the scoring items a full appreciation of the significance of any non-compliance is not necessarily possible.

4.2 Environmental Issues

The issues identified during the monitoring event include the following:

- General management of alien invasive plant species and weeds within shoreline area of state land (**Figure 8**). It is acknowledged that this function forms part of the dam operator's duties.
- Various areas with little or no growth (**Figure 9 - 13**). It is not expected that adequate growth will be achieved until the wet season has commenced. Where necessary, problematic areas will need to be added to a snag list and these sites will be revisited by the ECO in March 2015.
- Spoil material left in riparian zone of watercourse on upstream left bank at Lower Loteni culvert.



Figure 9: Bare area – Route 11



Figure 10: Bare area - upstream left bank at dam wall



Figure 11: Bare areas – Ferret Lane



Figure 12: Bare area – downstream of fish barrier on right bank (*improvement shown since last monitoring event*)



Figure 13: Bare and eroded areas – fish barrier on right bank

4.3 Pending Environmental Management Considerations

The following matters are regarded as significant environmental management priorities that require appropriate attention, or issues that need to be clarified with the project team:

- Phase 1 of baseline study for the rehabilitation of wetlands and biodiversity offsets has been completed. The specialist is currently drafting the implementation plan (phase 2 of the study), which will be completed by 10 October 2014. An Authorities Meeting has been scheduled for 10 September 2010 and an Offsets Work Group Meeting will be held later that month.
- Management guidelines to be included in the Resource Management Plan for the management of the dam and state land.
- Site visit to be arranged at appropriate time with the EMC members to show them the areas that have been rehabilitated to allow for signing off in terms of the RoD condition.
- Rehabilitated areas to be compared with pre-construction state – photographs from the pre-construction survey to be used in this regard.
- Monitor sediment contribution from areas affected by construction activities.
- Maintain firebreaks on state land in consultation with adjoining landowners and relevant fire protection associations. It is noted that the state land surrounding the dam has been handed over to DWA, who have delegated operation to Umgeni Water. This responsibility now lies with the operator. Details of firebreaks have been included in the Operation and Maintenance Manual and the accountability now lies with Umgeni Water.
- Query regarding cover depth of topsoil that was placed at old camp site area at Lower Loteni culverts.
- Compare structure of watercourse affected by construction activities undertaken along Route 11 with pre-construction state. Noted that current movement of cattle is contributing to the destabilisation of the banks.
- Prevent illegal access to state land and repair various breaches in fence (example shown in **Figure 14**). This is an operational matter that needs to be attended to by the Department of Water and Sanitation and Umgeni Water.
- Rehabilitation of access road created along Route 11 (**Figure 15**).
- Remove concrete wall at compensation pipe at fish barrier.
- Minimise siltation of watercourse during remaining works at fish barrier.



Figure 14: Breach in fence



Figure 15: Rehabilitation of second access road (Route 11)

*

COMMENTS:

TCTA

5 ISSUES AND COMPLAINTS

Appendix C contains an extract from the Issues and Complaints Register that is maintained by the Social Monitor, focussing on those unresolved matters that relate specifically to rehabilitation and reinstatement.

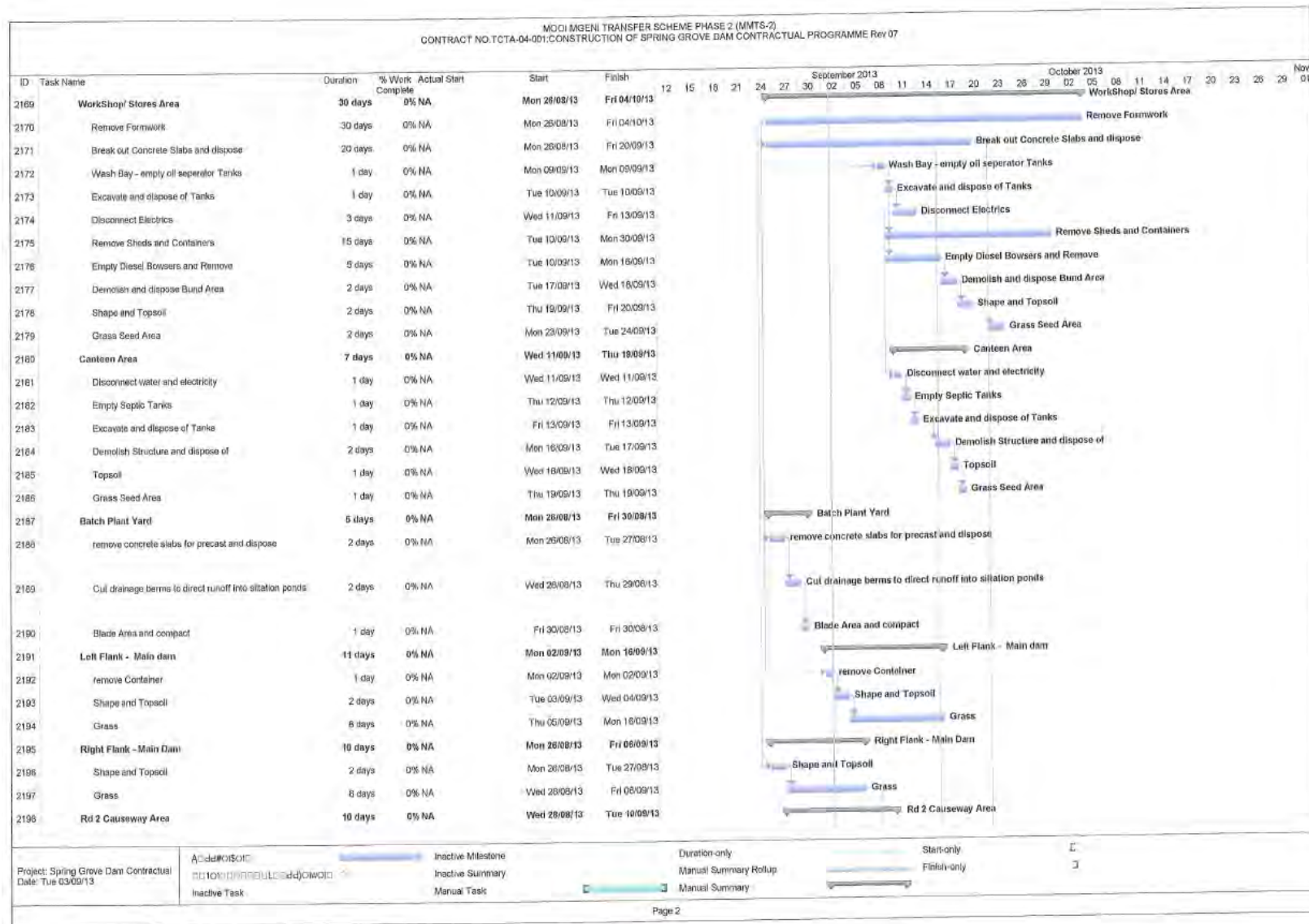
*

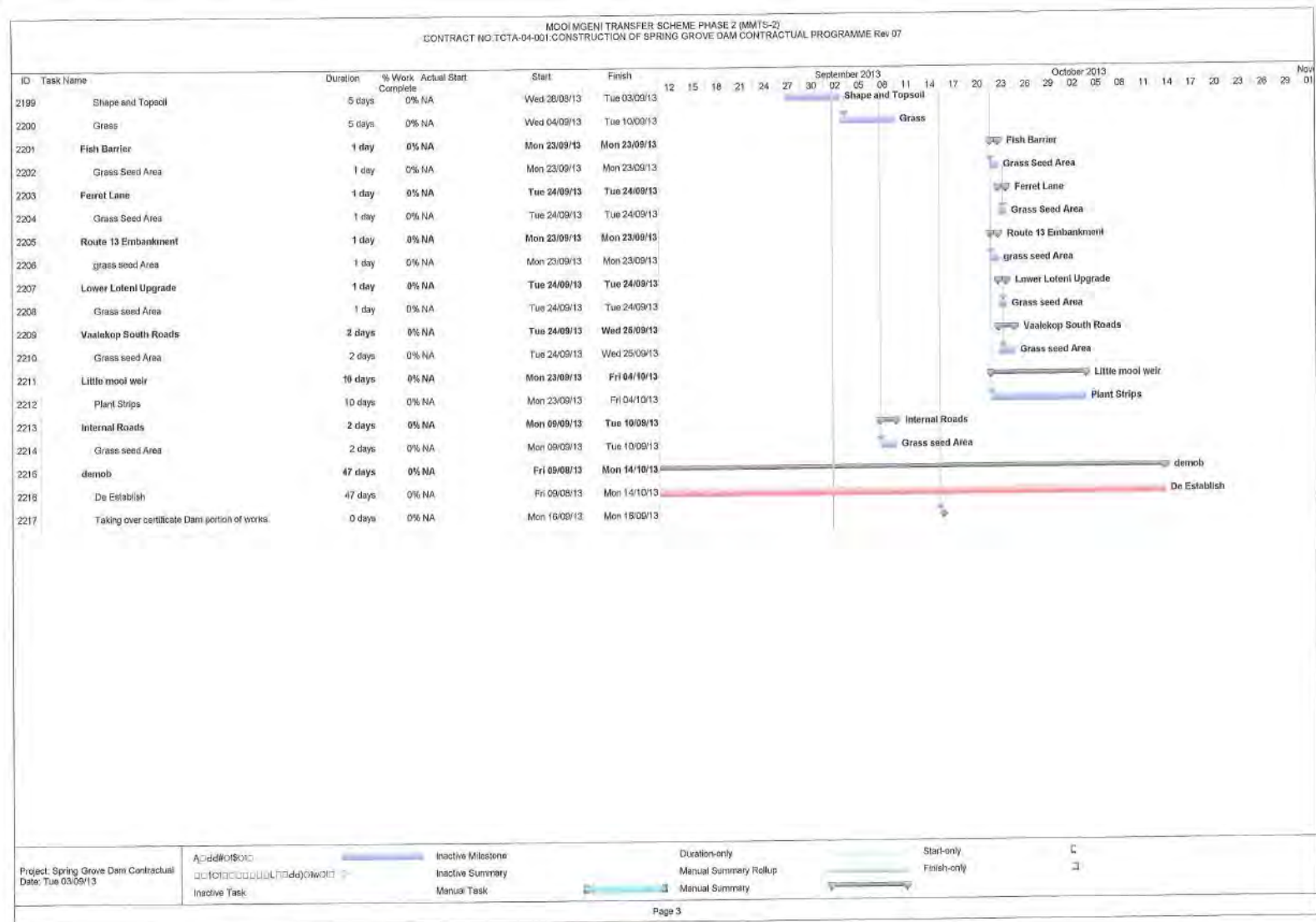
COMMENTS:

TCTA	
------	--

APPENDIX A

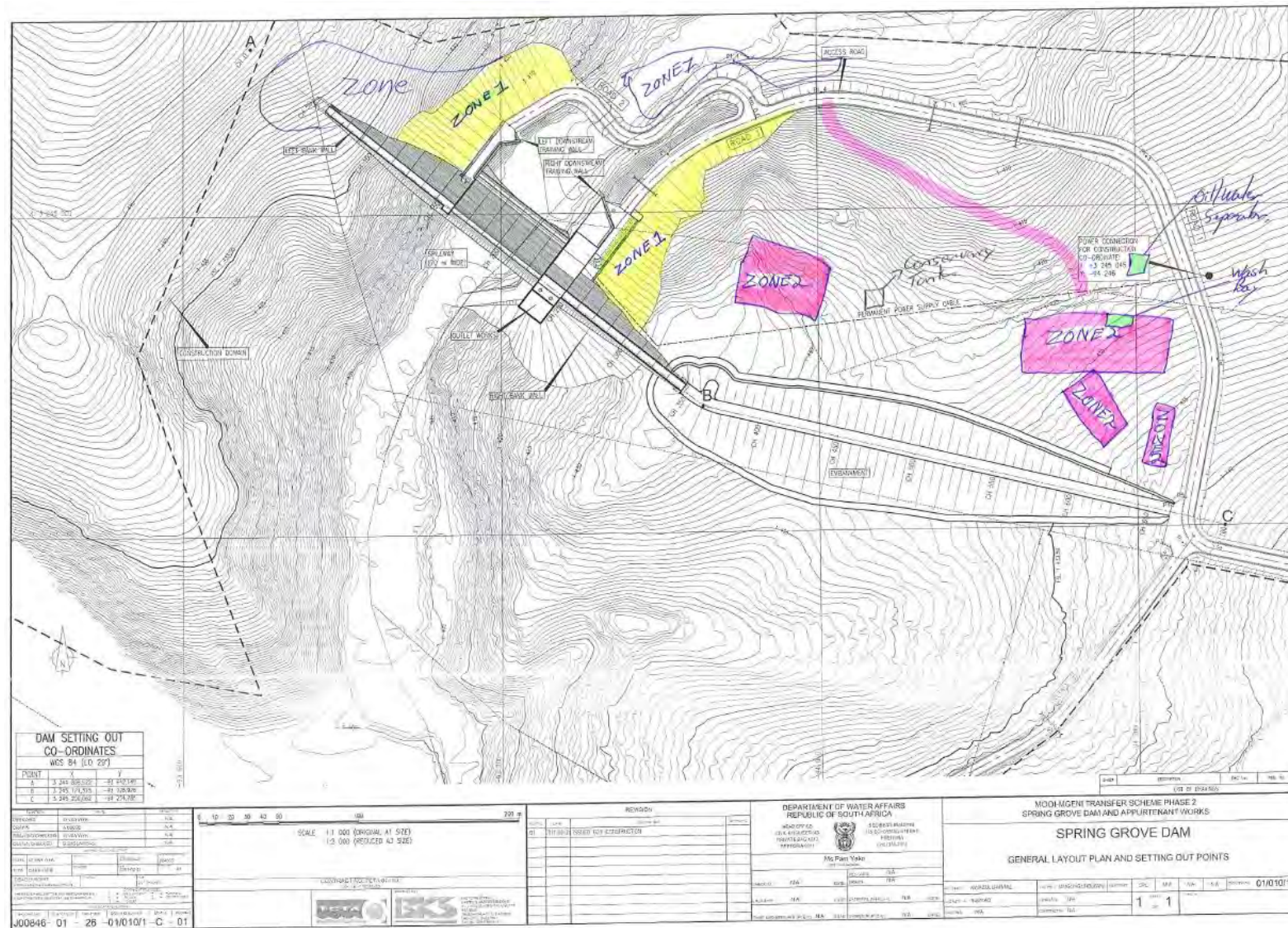
REHABILITATION SCHEDULE





APPENDIX B

REHABILITATION ZONES SHOWN IN CONTRACTOR'S METHOD STATEMENT





APPENDIX C

EXTRACT FROM ISSUES AND COMPLAINTS REGISTER – SPECIFIC TO REHABILITATION

ISSUES AND COMPLAINTS REGISTER

Issue No.	Date submitted	Submitted by (name)	Description of Issue	Issue reported to (name)	Date reported	Response to Issue	Resolved and Communicated	SM memo/notes regarding status of resolution	Relevant action category
168	29-Mar-12	Sven Turner	A huge road has been graded through natural veld. This is unacceptable!	Sandhisha Jay Narain, Ryan Phelan, Gavin Elliott, Ulrich Haydam, Andrew Olden	29-Mar-12	It was graded by the fencing contractors, wrongly. It will be rehabilitated. The final plans for this will be communicated after the Easter break. 17 April 2012: Scar along fence line will be rehabilitated at the same time as there is plant in the area working on Route 11, which should be sometime in June 2012. Scar along fence line has been back-graded (overburden placed on certain sections of the scar): 09 July 2012	N	Scar has been hydro seeded and also used as a site for habitat creation, sign-off awaited	Fencing scar rehab
173	03-Apr-12	Piet Pelser	Piet is still receiving rates bills. He will not pay any rates bill until the subdivision of his property has gone through.	Ugo Hiddema, Liza van der Merwe	03-Apr-12	From Ugo Hiddema: We will have to deal with it. Liza and I have discussed this with Tente and it is a general problem that will have to be solved quickly. From Liza: As discussed previously the rates and taxes of the expropriated parts of properties and entire properties now becomes TCTA's to pay – either pro-rata or in total. I believe we will have to issue a letter to the land owners to inform them what the protocol will be as far as the rates and taxes go.	N	No firm response re rates. Subdivisions to be registered in mid 2014.	Land acquisition
214	08-May-12	Pippa Huggins	At EMC: there's a scar along the fence line on Piet Pelser's property. How long until it will be rehabilitated?	Gavin Elliott, Ryan Phelan, Sandhisha Jay Narain	08-May-12	Response from Gavin Elliott at EMC: the Spec re rehabilitation can be sent to Pippa Huggins. The method statement re rehabilitation will cover the requirements of the spec. The scar has been partially repaired, but has not yet been signed-off on.	N	Scar has been hydro seeded and also used as a site for habitat creation, sign-off awaited	Fencing scar rehab
258	21-Jun-12	Chris King	Dear Katie, I have just driven along the newly constructed road situated on Inchbrakie Farm to allow access to the Riverholm property. I note that between the two properties is a flimsy wire fence across the road. Can you please assure me that a cattle grid with gate adjacent will be fitted at this point? I understand from Mike Forsyth that it has been agreed that this portion of land for the servitude will be purchased. If so then the existing fence must be moved to incorporate the road.	Gavin Elliott	21-Jun-12	Dear Chris, We have put in an order for seven cattle grids, one of which will go on the new access road at the boundary between you and Riverholm. The team has also been instructed that a gate needs to be placed adjacent to the grid. Two of the grids are to be placed in the fence line on either end of Route 13, and here we will also ensure that gates are placed alongside the grids. It has been agreed that the land for Riverholm's access will be purchased from you, but it will not be added to the dam basin and so, according to discussions so far, we cannot move the expropriation fence up to incorporate the road. If you wish the road to be fenced then we can instruct the contractor to do so. Please let me know what you'd like? Kind regards, Katie	N	Land will be purchased from Chris King. To be closed when servitude agreement is in place.	Land acquisition

Issue No.	Date submitted	Submitted by (name)	Description of Issue	Issue reported to (name)	Date reported	Response to Issue	Resolved and Communicated	SM memo/notes regarding status of resolution	Relevant action category
			Please be kind enough to confirm these observations. Kind regards, Chris						
310	24-Jul-12	Baden Smythe and Rob McCarthy	Cannot move off the land (i.e. Move the pivot) until the Eskom lines have been reconfigured. Also, what is the news regarding re-housing for staff, who will all be retrenched at the end of July.	Tente Tente, Andrew Olden, James Nyakale	24-Jul-12	e-mail from Katie to TCTA: Just had a call from the Smythe's lawyer, Rob McCarthy, who asked what progress has been made with the families on the Smythe's property, seeing that the Strathern labour force will be retrenched at the end of this month (31 July 2012). I am obviously not in a position to give him a progress report and have been advised that he should be seeking updates from a lawyer instead. Mr McCarthy has been asked about progress by his client. If feedback should or can be given to the Smythes who should be doing this? Response from James Nyakale: Hi, I have attached the quotations and schematic diagrams indicating the relocations. Please pass onto Smythe. All the costs have been paid by TCTA. It is also important to emphasize that TCTA started the process with Eskom because the landowners were not doing so. Regards, James. Response from Tente: Thank Katie, We all recognise the impacts of the project. But Baden If I am correct he is one the landowner who was expropriated 1st (toward the end of 2010) so he has had more than 18months to engage with Eskom, so he can move his equipment. TCTA's effort in putting him on Phase 1 has not yielded the intended results.	N	Housing not yet built, and so people remain resident on the Smythes' property. Issue to be closed when full relocation has taken place.	EMP for the relocation of occupants

Issue No.	Date submitted	Submitted by (name)	Description of Issue	Issue reported to (name)	Date reported	Response to Issue	Resolved and Communicated	SM memo/notes regarding status of resolution	Relevant action category
460	01-Nov-12	Tiff Whitehouse	Katie, Have you visited? How is it looking? Tiff	Donald Davies	01-Nov-12	Hi Tiff, Please see Donald's photos attached. There's still a fair amount to do, but the team is working hard at it. The weather has been absolutely awful, which has made a lot of work impossible to do. • If the weather holds the earthworks (taking up temporary access road and relaying it on the driveway) can be done within a week. • Meander Island will be grassed during the same time. • All the other outstanding items will also be done within this window. • Instrumentation for the instrumentation hut will be available to install at the end of this month (November). • The power supply has been disconnected and taken up. Driveway to be repaired. • The site office has been uplifted and taken away. • The concrete for the steel bridge bases was cast yesterday and the steel bridge will probably be installed before Friday. DWA and Umgeni Water are to start pumping again from tomorrow. Please let me know if you have any questions? When are you next planning to be here? Kind regards, Katie	N	Most activities have been completed, but issue only to be closed when rehab is finalised.	Mpofana rehab
539	18-Jan-13	Jenay Jonsson	This off road driving through my garden is completely unacceptable. Once again the truck drivers do their own thing with no respect for our land. I am beyond furious as this is right outside my front gate!!	Gavin Elliott, Andrew Olden, Salona Moodly, Donald Davies	18-Jan-13	Designated turning/pull off points have been proposed, and were not accepted. We make this proposal again, and will rehabilitate all of the damaged areas. Proposal accepted.	N	To be closed when rehabilitation has taken place in a satisfactory manner.	Inchbrakie-Vaalekop South Road verge rehab
551	24-Jan-13	Piet Pelser	1. Pump? When will it be back? Need drinking and stock watering and irrigation water supply if the pump is not back on the river tomorrow. 2. Rates? When will they be paid? Has received a summons. 3 cattle grids, when will those be placed? 4. Borehole of 2000l/hr is not sufficient for reinstatement of supply; it will never cover household needs!	Ryan Phelan, Ugo Hiddema, Gavin Elliott, Alain Augere	24-Jan-13	1. Pump back on river on 30 Jan 2013. 2. TCTA to provide answer. 3. Placed end July 2013. 4. BKS to provide answer.	N	No final answer re rates. Subdivisions to be registered in mid 2014	Land acquisition
598	25-Feb-13	Charles Jonsson	1. Via phone call: Sick of being fobbed off, latest incident (Jenay's	Peet Viljoen, Gavin Elliott,	25-Feb-13	Good Afternoon Charles, I confirm receipt of your email and will revert after consultation internally and with the	N	Resolution only when Charles is	Inchbrakie-Vaalekop

Issue No.	Date submitted	Submitted by (name)	Description of Issue	Issue reported to (name)	Date reported	Response to Issue	Resolved and Communicated	SM memo/notes regarding status of resolution	Relevant action category
			<p>tire) shows total lack of management and supervision and planning, gate will be closed tomorrow and a meeting must be set up. 2. Via e-mail to Tente Tente: Tente, This last complete fiasco where, with no warning, our access road was flooded, forcing my wife to drive across an incomplete, 16 meter high causeway with no safety barriers, and then being made to drive back over rough gravel, as seen in the photo, resulting in a puncture, is the final straw. Life along our road has become untenable, what with just today's fiasco, the speeding, the dust, the noise, the off-road driving, the way longer construction time, Sunday traffic that no one knows about, the long list of broken promises etc etc etc. Notice is hereby served that I am without further notice withdrawing my temporary right of access through my farm, until we reach agreement on the following : 1. Compensation and payment for the 2 punctures suffered in the past 10 days. 2. Compensation and payment for the loss of income suffered by me for not being able to rent out our cottage since January due to the continued chaos and disruption on our road. 3. A stricter and more controlled dust abatement policy, particularly as we head into the dry season, providing I allow continued use of our road. 4. Compensation and payment for the repainting of all my buildings damaged as a result of the excessive dust. 5. A written undertaking with a completion date</p>	Andrew Olden, Tente Tente		<p>rest of the team members. Having said that I can't claim that I am not aware of the challenges that we (the landowners and the project team) have/are experiencing with regards to the access road and the actual construction of the fish barrier. Be that as it may I was cautiously optimistic that things would not come to this point. I am still hopeful that we will be able to reach a point of common interest and restore trust amongst ourselves. Regards, Tente</p>		<p>satisfied with the final condition of the road post-rehabilitation, or when The Project is satisfied that the best job possible has been done.</p>	South road rehab

Issue No.	Date submitted	Submitted by (name)	Description of Issue	Issue reported to (name)	Date reported	Response to Issue	Resolved and Communicated	SM memo/notes regarding status of resolution	Relevant action category
			to replace the 2 meters wide kikuyu grass planted by me along all my road edges and destroyed by your vehicles. 6. A written undertaking with a completion date as to when my cattle gates with adjoining gates will be installed. I am enquiring as to how to lodge an official dispute with TCTA and so will be doing so shortly. This letter is written in my personal capacity and does not include the list of grievances of the other members of the Inchbrakie Road Property Owners. Kind Regards						
619	05-Mar-13	Peter Kidd	Hi Katie, Sometime before commencement of the fish barrier, various suggestions were made to minimize the negative environmental impact a concrete wall will have on this beautiful valley. All these suggestions seemed to be positively and fairly enthusiastically accepted at the time. Amongst them were rocks to make the weir look more like a waterfall, and colouration of the concrete to make it look more like the surrounding area. Please note I'm referring to the actual area where the water comes over, and the large concrete stays on the sides, - not the grassed side areas away from the water. At the moment, from my side, all I see is a large Spaghetti Junction concrete wall. Please tell me that this is going to be softened into the environment in the ways previously suggested, and that we are not going to be gazing at a Spaghetti Junction monstrosity that we seem to be	Gavin Elliott, Kogi Govender, Sandhisha Jay Narain, Salona Moody	05-Mar-13	Via phone call: visual mitigation will probably only be in the form of re-planting and rehabilitation, but your queries will be forwarded to the client and engineering team.	N	Landowner not yet satisfied with final rehab at Fish Barrier.	Fish Barrier visual impact and mitigation

Issue No.	Date submitted	Submitted by (name)	Description of Issue	Issue reported to (name)	Date reported	Response to Issue	Resolved and Communicated	SM memo/notes regarding status of resolution	Relevant action category
			getting. Note that very little water comes over in winter, so the view will be primarily flat Spaghetti Junction concrete! Kind regards, Peter Kidd.						
658	28-Mar-13	Charles Jonsson	Katie, Greg called me earlier to tell me that my cattle were on the Marshalls land, near the new quarry. He also told me that he presumes they go there along the dam basin as a contractor this week has removed he old boundary fences between the properties. Is this correct ? If so, this means that I will not be able to water my cattle at the river so TCTA will need to provide me with an alternate water source as both my dams can dry up in winter. Kind Regards	Gavin Elliott; Ugo Hiddema	28-Mar-13	Response: Hi Charles, Sorry, this seems to have been an oversight. I wasn't aware that any fences above the 1416 contour were being cleared, and had I been we could have talked through the impacts. I will need to speak to our client about what the long term solution will be, but in the mean time (and only after Easter I'm afraid) we'll re-erect fences so that your cattle have access to water. Kind regards, Katie. 15 April 2013: G5 instructed to put fences down to the river on either side of the gate in the purchase line fence, in order for cattle to drink water. 16 April 2013: Hi Charles, This has already been lodged as an official complaint in my register, and Gavin has sent a site instruction to the contractor to put a 3 strand cattle fence down to the river for you, from either side of the gate that is in the purchase line fence. The fencing team had demobilised, so will do it as soon as they get back (expected this week). In the mean time I hope that your dam is sufficient. I can't give you an answer about the long term solution. Please be in contact with TCTA about your future cattle watering options. Kind regards, Katie	N	No long-term solution agreed upon with TCTA. It is assumed that the cattle will be able to drink at the river.	Land acquisition

Issue No.	Date submitted	Submitted by (name)	Description of Issue	Issue reported to (name)	Date reported	Response to Issue	Resolved and Communicated	SM memo/notes regarding status of resolution	Relevant action category
685	15-Apr-13	Rob and Bev McKenzie	1. Hi Katie, I received a call from Idah this morning to say that she is very unhappy that Clive Garlick's staff have "money in their hands" as a result of the termination of their employment contracts and then subsequent re-employment, and that she has received nothing from TCTA. How do you suggest I go about tackling this? Should I get Idah to confirm in writing that she wishes to terminate her employment with us and then pay her the mandatory one week's wages per year employed? Do I then claim this amount from TCTA? Kind regards, Rob 2. Hi Katie, Idah's problem seems to be more complex than it first sounded. She is very concerned about the situation at her Bruntville house and, although she has retained her job, she and her family were moved away from their home of many years. Of particular concern is her elderly mother (95 years old now I think) who doesn't seem to have adjusted well to the new abode. Idah says she was able to deal with working and taking care of her mother when they were living at the bottom of the hill but is now battling to cope with the situation. She feels that she may have to give up her job as she has no other way of looking after Angelina. Kind regards, Bev	Lonwabo Mapolisa, James Nyakale	15-Apr-13	2. Hi Bev, This is rather a difficult one, and I'm sorry that you're in the middle of the situation. The problem is that Idah has not lost her job due to any impact that the dam has had. Farm workers have lost their jobs because of farms being downsized and businesses needing to be reconfigured which has meant that fewer staff members are needed. Idah has been able to retain her job (jobs) on Vaalekop, and as I understand it you've very kindly upped her wages so that her new travel expenses don't eat into her salary. If Idah resigns TCTA would not be obliged to be involved. It would be extremely short-sighted of Idah to resign. She's one of the lucky ones and is not faced with the job-hunt and uncertainty that most other people are now faced with. However, I'll speak with Lonwabo about a fair way in which to tackle this, especially so that you don't have to take the responsibility. Lonwabo may have a different perspective and may be able to offer just the solution that Idah wants. Kind regards. Katie	N	Idah not satisfied	EMP for relocation of occupants
715	02-May-13	Joyce Mchunu	Dissatisfied with the way in which her mother (Juliet) has been moved by the project. Feels that she should also be given a project house, as well as the house bought for her	Lonwabo Mapolisa	02-May-13	Lonwabo will speak with Joyce and Juliet, and discover what the real issue is. Proposal that the landowner extend the new house and then claim from TCTA.	N	No resolution.	EMP for relocation of occupants

Issue No.	Date submitted	Submitted by (name)	Description of Issue	Issue reported to (name)	Date reported	Response to Issue	Resolved and Communicated	SM memo/notes regarding status of resolution	Relevant action category
			mother by the landowner. Joyce has consulted a lawyer who says that she has a case. Feels that her mother has also not been paid what she should have been. Also feels that her sister (Elta) has not been treated fairly. And, she and her mother and sister were not invited to the party in Bruntville that was held for everyone else!						
761	27-May-13	Charles Jonsson	Fencing? Cattle watering? When may this eventually happen?	Ugo Hiddema, Gavin Elliott	27-May-13	We will put a temporary fencing down to the river, at right angles to the purchase line, so that your cattle may drink. The fencing team will be available within the next 10 days to two weeks. The permanent solution, however, must be a decision made between you and TCTA. Please contact TCTA about the matter.	N	No long-term solution agreed upon with TCTA. It is assumed that the cattle will be able to drink at the river.	Land acquisition
895	14-Aug-13	John Wetton	Hi Katie, As mentioned to I had heard that the re hab of the above was going to be deferred until the pipeline pumping station etc had been completed. You have indicated that this is not so and I am pleased to hear this. The above is easy to comprehend but from my perspective in addition to the above the drainage channel outside my fence line needs some re engineering to take the water further down my property to avoid flooding my cottages. The triangle of land opposite me needs clean up and the Eskom pole needs to be straightened up. Do you have a snag list which includes issues raised by the community. If not I suggest you get one as there will be issues raised when the contractor has left site and we will be left with a problem. Thanks, John	Gavin Elliott	14-Aug-13	Hi John, Thanks so much for following your call up with an e-mail. The rehabilitation of the D146 and road verges will not be delayed until the end of the next contract. It will be done under G5, as soon as they can mobilise resources away from contractual completion deadlines. In fact, they need to attend to the road surface as well as the drainage and verge rehab. Gavin is aware of the drainage outside your fence line, and it is on his snag list. I do have a snag list of issues raised by the community. The snag list has been developed from my issue register, and in particular from the open issues in the register. If you are aware of mutterings in the community then please let me know, because only the issues raised formally through me could be attended to. I can't gauge what hopes and expectations there are unless people are in touch. Kind regards, Katie	N	D146 rehab still underway	D146 rehab

Issue No.	Date submitted	Submitted by (name)	Description of Issue	Issue reported to (name)	Date reported	Response to Issue	Resolved and Communicated	SM memo/notes regarding status of resolution	Relevant action category
915	23-Aug-13	Patrick Johnson	Hi Katie, Quarry rehab From the drawings is looks like an access was drawn on top or the bank next the fence. As we discussed at the meeting we need an access track to the south side of the quarry, Andrew ,Willy, Rick and I discussed the path of the access track next to the fence to the south side of the quarry. The borrow pit rehab. As discussed it will be benched to a flat area next to the road. And as discussed before any plant is removed a site inspection is to be done. So no further expense is incurred loading and moving plant, and moving it back again! Regards Patrick	Sandhisha Jay Narain, Ntsoeleng Mohale, Peet Viljoen	23-Aug-13	Hi Patrick, Thanks for meeting with us today, twice! Here's a sum-up of the rehabilitation conclusions, and snags: Quarry: Road was constructed, to your satisfaction, today. Fence was fixed, as was the gate, this afternoon. Further top soiling and seeing to take place. Clay borrow: Don Robertson will cut trees; the useable logs will be stacked for your use, and the unusable wood will be buried. Material to be pulled back from the trees. Boulders to be removed to the sides of the area. Area to be shaped and topsoiled. Entrance to be created. Main weir site: Agreed that rocks are to be removed. The fence on the right banks is not to be taken down now; Ryan will liaise with you about timing. Area (minus permanent access road) is to be topsoiled. Platform to be created for your pump station. Kind regards, Katie	N	Final inspection still to be done.	Little Mooi Weir Rehab
933	03-Sep-13	Mary Lund	Dear Katy, I understand that you are having your last monthly EMC meeting tomorrow and there are a couple of issues/ reminders which I wanted some answers on.1. Rehabilitation of the river just downstream of the weir. We have on numerous occasions asked that a deep channel be left in this section of the river to prevent foot or vehicle traffic, as prior to construction the river was only ever navigable on foot in the very dry period of the year and even then one had to be prepared to wade through the river. At the last meeting I attended the instruction was given that when rehabilitation took place we should be consulted in order that we were happy with the channel created. A deep artificial channel was created on our side of the river to allow water flow from the outlet pipe, however it has already been filled in 2 places to allow foot	Gavin Elliott	03-Sep-13	Hi Mary, Thanks so much for putting this in writing after our discussion yesterday. It always helps a great deal when the rest of my team can see the points directly from you. I've sent your mail on to Gavin for his response about some matters, but can report the following in the mean time: 1. Response needed from Gavin. Bellwood is currently accessing both the left and right bank to do work, and so has re-created a temporary downstream crossing. 2. Grant from Bellwood assures me that he is still working on the tidying up of all of the verges. This will be attended to. 3. Response needed from Gavin. 4. Noted, we are aware that the permanent fencing needs to go in. 5. Response needed from Gavin. 6. Noted, and I'll find out whether you'd be able to collect rock at your own cost. Kind regards, Katie 04 September 2013, from Gavin Elliott: Hi Mary, Following up on your query on the Rap surfacing placed on your section of road. The Rap material is certainly the real thing, and was obtained from a stockpile source in Pmbg. I've discussed your concerns with the Contractor who confirms that the material is in the standard form of a gravel obtained from the rehabilitation of asphalt surfacing through a milling off process. His view is that the material will begin to bond once the seasonal	N	To be closed when the final work is done at the Fish Barrier (anticipated to be during July 2014)	Fish Barrier rehab

Issue No.	Date submitted	Submitted by (name)	Description of Issue	Issue reported to (name)	Date reported	Response to Issue	Resolved and Communicated	SM memo/notes regarding status of resolution	Relevant action category
			<p>and vehicle access. Even more worrying is that we now understand that the intent is to fill this channel (as it is artificial) and attempt to return the river to its original course, and open up its original channels. This worries me. The original channels have been so interfered with and the river is now more than double its original width at the weir. I imagine what will happen is that the channel will be filled, or part filled, with rock but before rehabilitation is completed the water will come over the weir and we will be left without a deep channel. If the rocks are not going to be removed from the channel, please could we meet with the environmental monitor on site to discuss what will be done.</p> <p>2. Road verges. The verges on our section of road appear to have been forgotten. They still need to be neatened and drainage opened up.</p> <p>3. Rap surface at our entrance. We understood that we would be left with a solid surface, whilst this is more like a gravel. Perhaps there is still something to be sprayed on it? If not, could you please come and have a look at it as we are not what we were promised.</p> <p>4. Fencing. Just a reminder that there is still a bit to do. Gates need to be removed from access road to the weir and that section of fencing replaced, a section between us and the Kidds needs fencing, fencing around the weir to be completed and gate for vehicle access placed.</p> <p>5. Weir. Is this supposed to leak? Quite a bit of water appears to be coming through</p>			<p>temperature rises again in the summer. I'm not an expert, but may I suggest that you find out from whoever did your original strips of Rap how it was done and we can discuss further. Regards, Gavin</p>			

Issue No.	Date submitted	Submitted by (name)	Description of Issue	Issue reported to (name)	Date reported	Response to Issue	Resolved and Communicated	SM memo/notes regarding status of resolution	Relevant action category
			the structure – hope this is all according to plan! 6. Use of resources. Finally, I would like a comment made at the EMC about the use of resources for rehabilitation. A huge amount of beautiful rock was blasted/dug out in order to construct the weir. In spite of numerous requests for us to access these rocks, these were all denied and the rocks simply covered up with soil and will now be flooded by water. They would have been beautiful and useful in the rehabilitation around the weir. Perhaps it would be worth bearing this in mind for future projects. Would there be any objections if we accessed some of these, at our own cost, before the area is flooded? Sincerely, Mary Lund						
970	11-Oct-13	Charles Jonsson	Dear Katie, There remain several unresolved issues on which I would like clarification and a timeline as they have dragged on. 1. The concrete strips. We have a written agreement that the existing ones would be rehabilitated and new ones done on the riverside downhill slope. Yesterday, the clowns arrived and put topsoil on the double road section reducing our road to the old single, now broken, concrete strips. My questions : A, surely you don't expect us to drive over unhardened topsoil whilst you re-do the concrete strips, B, when will you be doing the strips ? Driving over unhardened topsoil on a steep slope, with any rain, will be impossible. 2. The cattle grates are completely useless,	Gavin Elliott, Ryan Phelan, Andrew Olden	11-Oct-13	Thanks Charles, Answers: 1. Concrete strips: The reason that the topsoil has been placed is because we asked all landowners whether they wanted a dual lane at the blind rise, and the response was that most people did not. So, we're rehabilitating the second lane that we put in. The concrete strips are going in over the next couple of weeks, as per my e-mail yesterday afternoon. Grant Novall will manage traffic so that the topsoil is minimally disturbed and so that you have access at all times. 2. Cattle grates: thanks for this feedback, we will need to come up with a plan then. This had been brought to our attention by Greg and Sven, but the general consensus was that we would need to test them out before retro-fitting them. 3. Boundary fences: as you know this is a TCTA land acquisition matter, and so out of my hands. You need to address this directly with TCTA. I think that I've given you the correct contact details before, but please address the query to James Nyakale and Kogi Govender at JNyakale@tcta.co.za and KGovender@tcta.co.za. In May I said I was sorry	N	Cattle watering issue outstanding	Land acquisition

Issue No.	Date submitted	Submitted by (name)	Description of Issue	Issue reported to (name)	Date reported	Response to Issue	Resolved and Communicated	SM memo/notes regarding status of resolution	Relevant action category
			<p>my cattle go straight over the top of them. They are incorrectly designed as they are simply too flat. As long as there is a flat surface on which the animal can place their hoof flat, they will walk over it. The metal plates in the middle and the concrete plates on the edges are all wide enough for the animals to place their hoof flat and therefore walk straight over. This needs to be attended to as currently they are completely ineffective. 3. The expropriation fence. There has been a lot of debate about if this fence will remain or be removed with nothing yet cast in stone. As discussed with you several times, was the removal of the old boundary fences below this line which now prevents me from watering my cattle at the river as they now wander off up and down river. In May, you told me that these fences were taken down incorrectly and would be put back within weeks. I said that preventing me from watering my cattle at the river would mean that you would need to provide me with an alternate water source as my storage dams often dry up, one is now bone dry and the other has dropped 1,5 meters. A lasting solution needs to be found and quickly as without a good rain, both dams will be dry within the next month.</p> <p>Thankfully, we are coming to this long drawn out saga, but I will not be signing off on anything until these remaining issues are dealt with. Kind Regards, Charles Jonsson.</p>			<p>that you hadn't been given warning about the fences being removed, but that they would need to be permanently removed (TCTA's land), but that we could put a temporary fence back while the land is still under the contractor's control. Again, I'm sorry that this was not done (!). We will do that, but cannot commit to any long term solution for you, since the question of stock watering needs to be addressed through the expropriation process. Please be in touch with further queries; I agree with you that we can't sign-off on rehabilitation matters until we have actually done the rehabilitation, and that we need to re-look at the cattle grids. But, land acquisition matters will run-on for the foreseeable future. Kind regards, Katie</p>			

Issue No.	Date submitted	Submitted by (name)	Description of Issue	Issue reported to (name)	Date reported	Response to Issue	Resolved and Communicated	SM memo/notes regarding status of resolution	Relevant action category
980	16-Oct-13	Clive Garlick	Unsupervised team of excavators/rollers etc came right across veld and have damaged veld and roads and fences very badly! Where are they going?	Grant Novall	16-Oct-13	Contractor apologises; unsupervised team, rehab will take place if needed, but should have left no scar.	N	Landowner not yet entirely happy; to be closed when further discussions have taken place.	Rehab
987	25-Oct-13	Adrian Wilson	Hi Katie, in the interests of transparency, I would appreciate it if information could be forwarded regarding both the operating rules for the dam and the environmental reserve determination for the river. I appreciate that these will be used as guidelines but they should in any case be "public domain" documents, certainly the latter. As I have mentioned in a previous email, though the Mooi River cannot be regarded as Class A in terms of the Ecological Status Classification, having lived with it on my boundary for the last 13 years, my view is that it is/was in very good nick. I have to be careful what I say because DWA is a client of mine, nevertheless DWA's record in terms of the operation of the Umgeni system has certainly not been without a fair degree of criticism and I refer specifically here to releases for the environment. While one can possibly say (arguably) that the Umgeni is a "working river", we certainly shouldn't allow the Mooi to be sacrificed in this way. As you know, the National Water Act gives the environmental reserve extremely high level status, effectively only surpassed by the social reserve, and	Danie Badenhorst, Peet Viljoen, Kogi Govender	25-Oct-13	Katie, Regarding the e-mail by Adrian, the following is important: <ul style="list-style-type: none"> • Umgeni Water will operate the system as from end of November 2013. • Reserve releases from Spring Grove Dam form part of the EIA authorization as well as DWA Mooi River Catchment studies. • We are requesting the DWA and TCTA if they could release the information. Regards, Danie	N	Complainant not satisfied.	Future operating system of the dam

Issue No.	Date submitted	Submitted by (name)	Description of Issue	Issue reported to (name)	Date reported	Response to Issue	Resolved and Communicated	SM memo/notes regarding status of resolution	Relevant action category
			all players, including DWA, should "live" this philosophy. Adrian						
997	03-Nov-13	Peter Kidd	Hi Katie, We were up this weekend, and Julia and I noticed that the weir is leaking at some of the seams, and that there are several (about 40) spots where the water is shooting straight through the wall, almost like when our Jack Russell has savaged the hosepipe. Is this normal? If not, what is going to happen about it? Also, the area below the weir and on the sides still looks like a demolition site. I'm assuming that some serious rehabilitation work and planting is still coming??? Thirdly, the road going down to the gate runs straight down to the river. I realize that the construction teams are hardly out of there, but during the last rains I watched, from my veranda, mud, topsoil and muck flowing straight into the river. Unacceptable. Previously there was a shoulder in the road that sent the drainage onto the field below. Can this be re-instated? Regards, Peter Kidd. Thanks Katie, It reminds me of that brave bloke who stuck his finger in the dyke in Holland. Saved the country. I have instructed Themba to prepare himself mentally for a repeat of above scenario. He is hyping himself up as we speak. Regards, Peter.	Gavin Elliott, Ntsoeleng Mohale	03-Nov-13	Dear Peter, That is normal, but they're not leaks. The water behaves like that as it hits little irregularities in the concrete (little rough spots at the joints), and forms small cascades as it runs down the wall. There is one leak, on the left bank, where the wall was keyed into the bank. Some water is escaping through a weak section there, and that is now being grouted and fixed (the big red grouting machine). The area below the weir and on the banks still needs to be rehabilitated. Some material will be moved to fill-in the artificial channel/river diversion, and will be landscaped. Mitre drains can be cut on that road down to the weir. Thanks for pointing that out. Kind regards, Katie From Greg: I'm assuming the small holes in the weir are not a major concern. As I understand it concrete structures under pressure are porous.	N	Landowner not yet satisfied with final rehab at Fish Barrier.	Fish Barrier rehab

Issue No.	Date submitted	Submitted by (name)	Description of Issue	Issue reported to (name)	Date reported	Response to Issue	Resolved and Communicated	SM memo/notes regarding status of resolution	Relevant action category
998	03-Nov-13	Mary Lund	Dear Katie, I agree with Pete that the section below the weir is still looking dreadful. I do have two issues to raise: 1. The work which we agreed upon at 2 meetings on site with Ryan and Peet present has yet to be done. 2. I know that Alex March is still coming back to complete rehabilitation work however I am really concerned that the area between the artificial channel on our side of the river and the original river course has not been included in the rehabilitation plan. I was present when it was decided which area he would be rehabilitating and at that meeting it was not pointed out to Alex or myself that the artificial channel would be filled in i.e. the river would be diverted back to its original course almost immediately downstream of the weir. Whilst we have been informed that the artificial channel will be filled in, I have heard of no plans to then topsoil and plant the area. Regards, Mary. Thanks Katy. Ryan did arrange with us to allow access for the excavator. However, this sounds like access for more than one excavator. We have already had one extra access road unnecessarily created due to early rehab of the first one. If you are needing access for vehicles again please could you use one of the road which has already been rehabilitated. We are not even allowing access for our own vehicles in order for the area to recover as quickly as possible and would appreciate it if as little traffic as	Gavin Elliott, Ryan Phelan	03-Nov-13	Dear Mary, 1. Agreed; we needed to wait for the weir to fill first, to observe the downstream flow, and now need to mobilise resources (excavator etc.) to come onto site to do the final rehabilitation work. This will still be done. 2. The area that you've mentioned is directly in the path of the overflow/spillway. As was explained by Peet, whatever loose material is there, plus the rocks below the channel, will be used to back-fill the channel. It cannot be topsoiled and planted, though. Kind regards, Katie. Hi K – please tell Mary that the best is to leave the re-alignment of the fence until after concreting of the comp. pipe and rehab is completed. It doesn't make a lot of sense to move it now with a risk of damage by machines. We also need to know if they want to keep a gate in that position or not. Re-assure her that we will not let the contractor run away without our signing off on outstanding matters. G	N	Landowner not yet satisfied with final rehab at Fish Barrier.	Fish Barrier reinstatement

Issue No.	Date submitted	Submitted by (name)	Description of Issue	Issue reported to (name)	Date reported	Response to Issue	Resolved and Communicated	SM memo/notes regarding status of resolution	Relevant action category
			possible goes down. Once again please could you pass on the request to open up the original deep channel on our side of the river. Even though it is not visible on your photos, it was definitely there and helps stop foot traffic. We have asked for this from the start of the project, and assurances have been given at plenty of meetings that the channel would be opened. Do we know when the fencing guys are coming ? Perhaps they could come in before the road is rehabilitated again. Sincerely, Mary						
1021	28-Nov-13	Mary Lund	Hi Katie, Weir rehab is looking so much better. We are insisting that you have to ensure that vehicles and cattle cannot cross the river below the weir. 1. It is an water quality issue. 2. It is a security issue. 3. It is a rehabilitation issue. TCTA has created this issue and they must take responsibility for it. Relying merely on the fact that is within the expropriation fence and therefore vehicles and cattle should not be there is not acceptable. We all know that vehicles and cattle will be within the fence line. Regards, Mary	Gavin Elliott, Ryan Phelan	28-Nov-13	Agreed; the deep channel that existed originally/naturally will remain.	N	Landowner not yet satisfied with final rehab at Fish Barrier.	Fish Barrier rehab
1032	14-Jan-14	Peter Scott	Thanks Katie, for this info. Compliments of the season to you and yr team. Also new year, new start. Any idea when they will be sorting out the verge and entrances to Shonalanga on the D146. To stop storm rain water. Brett's house took in more water over xmas. Plse advise as this is now rather urgent. thx	Gavin Elliott	14-Jan-14	Drainage has been attened to already;please indicate exactly what is unsatisfactory.	N	D146 continues to be worked on	D146 rehab

Issue No.	Date submitted	Submitted by (name)	Description of Issue	Issue reported to (name)	Date reported	Response to Issue	Resolved and Communicated	SM memo/notes regarding status of resolution	Relevant action category
1033	15-Jan-14	Tiff Whitehouse	Katie, Please see attached some photos of the weed that have sprung up around the house and on the island near the measuring weir. I am aware you did hydro-seed and there is evidence of some grass growing but as expected the weeds have invaded the open soil. Please arrange that they are pulled out before they go to seed so this does not become a permanent problem. Please keep me in the loop as to what your plans are. Regards, Tiff	Gavin Elliott, Ryan Phelan	15-Jan-14	Hi Tiff, Ryan Phelan (environmental monitor) visited, and the idea is to send a weeding team to your property to control and manage this problem during our liability period (until the end of this year). As soon as we have a timeline for the team's arrival I'll be in contact with you. Kind regards, Katie	N	Ongoing	Mpofana rehab
1036	21-Jan-14	Charles Jonsson	Dear Katie, Thank you for the repair work done recently on our access road. However, I do have a number of concerns which need to be addressed. 1. The RAP topping on the piece of road on the 1st hill off the tar district road has not proved successful and a more suitable alternative needs to be found. 2. The steep bank on the uphill side of Chapmans Peak Drive, as predicted, slid into the road in 2 places during recent heavy rain. As it is too steep to dig a trench at the top, heavy rain will continue to run off here, continuing to erode the topsoil and wash it into the road. Any vegetation planted in this thin layer of topsoil, will never take root into the clay underneath, so unless a gabion is made at the base, or a wooded lattice is placed on the surface, this problem will continue every summer. This exact problem was to have been addressed after being raised at a meeting at the Huggins'.	Gavin Elliott	21-Jan-14	Dear Charles, Thank you so much for putting your points across so clearly. I had a short discussion with Gavin about them this morning, and I've passed each one on to the relevant engineers/team member. In the mean time: 1. Gavin drove that road today and is very happy with the way in which it has bound and is holding-up. The existing drainage on the road is not good, and so those small ruts have formed. He's going to consider a solution, and also speak to a RAP expert who will be looking at Andy and Mary's road before final sign-off. 2. I'm sure that you've seen Grant working on this problem already. He's creating a longer berm at the top of the hill to prevent run-off. After initial discussions there seems to be no need to other retaining work, but I will ask for that in writing and with a clear explanation. 3. I understand your point. This has been passed on to TCTA for comment. 4. This has been passed on to the design engineer. Gavin's reassured me that it will never overtop, and that the catchment isn't big enough to harness a volume that would need a spillway. I await further response. 5. I'm afraid that's in Mike Forsyth's hands at the moment. I'll follow-up again. I'm not sure what the delays are, since I'm sure that you have all signed it. The engineers will sign-off on Routes 9, 11 and 13. The rehabilitation on the banks of these roads needs to be signed off by the landowners and the EMC, but there's no sign-off of your private road that has been extensively	N	Discussions ongoing	Inchbrakie-Vaalekop South road rehab

Issue No.	Date submitted	Submitted by (name)	Description of Issue	Issue reported to (name)	Date reported	Response to Issue	Resolved and Communicated	SM memo/notes regarding status of resolution	Relevant action category
			<p>3. I recently consulted a contractor to come and give us a price to perform regular maintenance on the entire road. Of concern, was his comment that the current repairs, potholes, rainwater washaways, etc, would use about 20% of our replacement stone stockpile. This needs to be addressed as our original shale pit had an almost limitless lifetime, whilst the replacement may last 5 years, according to his calculations.</p> <p>4. On 2 occasions recently, after a heavy downpour, water backed up quite substantially on the upstream side of the causeway. Simply put, this means that the potential inflow is greater than the volume that the release pipe can handle. Couple this to the fact that this pipe is actually below ground level which means it is going to quickly silt up, any future major downpour when the dam is full, will mean that the water will go over the top of the causeway as there is no spillway. As we have no alternative access, this will be problematic, to say the least.</p> <p>5. The amended road servitude agreement is still not finalised. All 5 of these issues need to be addressed to all of our satisfaction prior to us being prepared to sign off on the road and thereafter assume responsibility for it. Kind Regards, Charles Jonsson.</p>			upgraded. I do understand what you mean though, about taking ownership. Kind regards, Katie			
1039	04-Feb-14	Patrick Johnson	Hi Katie, I'm not sure what the seeds are going to grow in as most of the top soil that was spread over the clay has washed away. So I don't	Gavin Elliott, Ryan Phelan	04-Feb-14	Thanks for your answer; agreed that some bare spots remain.	N	Rehab continues to be monitored	Little Mooi rehab

Issue No.	Date submitted	Submitted by (name)	Description of Issue	Issue reported to (name)	Date reported	Response to Issue	Resolved and Communicated	SM memo/notes regarding status of resolution	Relevant action category
			see much success in the so called hydro -seeding that was allegedly done on the borrow pit area. The area is unfenced so we don't plan and have not put our horses in there to graze. Thanks Patrick						
1041	06-Feb-14	Blake Mackenzie	Katie, I have some problems with the road and we will not take it over until rectified. Some of the items listed below: 1. Drainage problem at the corner where the rock bolsters are directing water across the road. 2. Quality of gravel is poor as it corrugates and becomes very loose when dry. 3. The access for the Waller's at the corner needs to be removed as part of the agreement for the consolidation sub divisions. Please get Gavin to phone so that we can arrange handover meeting. Thanks, Blake Mackenzie	Gavin Elliott	06-Feb-14		N	Handover yet to take place. Issues not resolved. Work is being carried out at the moment.	D146 rehab
1042	10-Feb-14	Tiff Whitehouse	Katie, Any update on when the weeding will take place? Tiff	Gavin Elliott, Ryan Phelan	10-Feb-14	Hi Tiff, Andrew Olden (G5 Contracts Manager, and honorary rehabilitation manager) is on his way down to your property now, in order to quantify the job and get the right team and equipment. He'll let me know when they plan to start (soon, if the work on the other areas is anything to go by – teams are being mobilised now). Kind regards, Katie	N	Weeding ongoing	Mpofana rehab
1043	16-Feb-04	Patrick Johnson	Hi Katie, Thanks for getting the guys to repair the tar road at the entrance to the construction site access, but I see the entrance to the clay borrow pit where the excavator was draining in and out the whole time has broken up very badly and now starting to wash with all the rain! Kind regards, Patrick	Gavin Elliott; Ntsoeleng Mohale, Blake Mackenzie	16-Feb-14	Hi Patrick, I'll chat to Gavin and Andrew about that too. I just told Andrew, and Blake Mackenzie, about the sad state of the entrance to the construction site so the repair was their doing. Kind regards, Katie	N	Blake to respond	Little Mooi rehab

Issue No.	Date submitted	Submitted by (name)	Description of Issue	Issue reported to (name)	Date reported	Response to Issue	Resolved and Communicated	SM memo/notes regarding status of resolution	Relevant action category
1045	06-Mar-14	Mary Lund	Hi Katie, The message re handing over of the dam has left me a little nervous. Can you confirm that the outstanding rehab jobs will still be attended to? I went down to have a look at the weir yesterday. There is still a lot of bare earth and quite a lot of wash is happening. Alex had planted it, but of course that all got disturbed when the construction vehicles came back. I think you need to come and take a look. Could you give me a call tomorrow sometime? Thanks, Mary. Thanks Katy, Can you confirm that they also have on their plan the steps we discussed earlier in the year to prevent vehicle access into the river from the opposite side? I wasn't aware the Russell had been on site - but pleased to know that the wheels are turning. Who should I be contacting directly re the expropriation/ transfer? I am just a bit concerned that they may forget to contact us before the documents are submitted. It is an issue as our access bond will be frozen while the documents are with the Deeds Office. Watching the dam fill up I am also a bit nervous about our pump house and the flood line - are we quite sure that it does not fall within this area? As always, thanks for your help. Regards, Mary	Gavin Elliott, Ryan Phelan	06-Mar-14	Dear Mary, The operations side of the dam has been handed over to Umgeni Water, but we're still in our year liability and rehab period and so work continues. I can confirm that the outstanding rehab jobs will be attended to (re-vegetation, stabilisation of slopes, re-alignment of your fence line which Ryan has just been to look at, etc). Weekly monitoring takes place, and Ryan may be able to give you more feedback in a few weeks. Thanks for keeping an eye on all of this. Kind regards, Katie	N	To be closed when rehab period over	Fish Barrier rehab
1046	27-Mar-14	Sindi (occupant)	Query re timing.	Lonwabo Mapolisa	27-Mar-14	Appointing a contractor takes a while; will keep you updated.	N		EMP for relocation of occupants

Issue No.	Date submitted	Submitted by (name)	Description of Issue	Issue reported to (name)	Date reported	Response to Issue	Resolved and Communicated	SM memo/notes regarding status of resolution	Relevant action category
1049	09-May-14	Charles Jonsson	<p>Dear Katie, Despite your assurances that our gravelled servitude road would require little or no maintenance for years to come, after 6 months there are now a few places that do now need attention. As detailed a few times by me when this road was being put in, we have neither the expertise nor the equipment to make the now necessary repairs, nor can I find a contractor who has. Please can you assist with providing the name / names of suitably qualified contractors as well as confirming with me who will be liable for this additional cost as it will undoubtedly be way in excess of what we would have incurred using farm machinery and farm labour. Kind Regards, Charles Jonsson. Chairman, Inchbrakie Road Fund. Response: Dear Katie, You are correct when you stated that you were sure to get a response from me, you would have had one sooner but for some reason I did not receive your mail. Firstly, let me correct a few inaccuracies.</p> <ol style="list-style-type: none"> 1. The road through our property was never impassable, being almost dead flat. 2. The gabion on the hairpin bend was only repaired by TCTA as it was their articulated truck delivering heavy equipment to the fish barrier that broke it in the 1st instance. 3. We are not arguing the merits of the current road versus the old one, I simply asked 2 questions, which remain unanswered. Gavin's reply is wholly insufficient and does not answer my 2 questions, namely to please provide us with a contractors name who is suitably qualified to repair such a road surface, and who will bear the ongoing cost thereof. For Gavin to suggest that we lightly rip the road surface is ill advised as this will result in a 6 km loose gravel road, 	Gavin Elliott	09-May-14	<p>30 May 2014: Dear Charles, Gavin has done a draft response, but our client hasn't commented on it yet. I really do hesitate to respond without TCTA's input, but I realise how frustrating it must be for you to have waited for 3 weeks for a reply. So, please see Gavin's response as follows, for your information and further discussion:</p> <ul style="list-style-type: none"> • The surfacing of a road with a properly graded natural gravel material provides an improvement in the serviceability of the road in that it has a hard wearing surface and will require less maintenance than a softer, finer grained material as was previously used. • The road has stood up extremely well through the recent high rainfall period. Some sections would have been impassable without emergency maintenance especially through Charles Jonsson's property and on the Huggins' property where drainage was virtually non-existent. The road fund was saved about R200 000 by The project upgrading the gabion hairpin bend. • A gravel road does need maintenance as does any road surface, but the extent and frequency depends on the type of surface. In the case of Vaalekop South road a high quality gravel was used which will serve its purpose well providing that occasional attention is given to it, in particular the drainage and the repairs of pot holes as and when they develop. The later should reduce now that the construction trafficking has ended. • In my view, providing that the farm machinery includes a means to lightly rip the surface where necessary prior to adding gravel, and a light roller or hand compactors, this should be adequate. Manual labour with picks, shovels and rakes would also be sufficient if properly supervised. • There is no doubt that the road is a significant improvement on the original road, based on the fact that gravelling of dirt roads by means of hardening a surface is standard practice. <p>I'm not expecting you to be satisfied with this explanation, so I do expect another considered e-mail from you. This is our pay weekend so I won't be able to chat to anyone until Tuesday. Our client is on site next week, so we hope to have a discussion about the road then. Chris also noted, during our last EMC, that she is not happy with the RAP that was placed on the steep slope at your driveway off the Lower Loteni Road (Wuthering Heights Road). This is another discussion point. Kind regards, Katie</p>	N		Inchbrakie-Vaalekop South road rehab

Issue No.	Date submitted	Submitted by (name)	Description of Issue	Issue reported to (name)	Date reported	Response to Issue	Resolved and Communicated	SM memo/notes regarding status of resolution	Relevant action category
1050	15-May-14	Mary Lund	Hi Ryan, I believe you will be coming to the weir this afternoon to assess the rehab. On our side could you have a look at the steep section of bank down to the river? There is quite a bit of wash on that bank which appears to be eroding under the rocks. Any chance we could we plant some more shrubs/ trees within the weir fence? We would like to create a visual/ sound barrier if possible. I mentioned to Katy that we really do not want a new road created when the last bit of work is done. We will allow single access/ exit for essential construction vehicles in through our gate to access the weir but request that all other vehicles (i.e. those transporting people) to be left up at the road. Essentially this means that vehicles will need to come in and stay down at the river until the work is completed. Hopefully this should avoid the necessity for any further rehab to access roads and minimize dust, noise etc. Look forward to hearing from you. Regards, Mary. Thanks Ryan, I will have another look when I go down this morning, but I don't think it is duckweed. Will send pictures. I was wondering whether plants reeds along the river banks would help prevents it? Beautiful day – enjoy. Mary	Ryan Phelan	15-May-14	Hi Mary, As promised I would get back to you. TCTA do not have any problem with you planting any trees inside the fenced area of the fish barrier provided they are indigenous species. Secondly, the remaining work we have to do to remove the concrete wall will all be done via Ballina access and none will be via your property. Katie mentioned to me about the water weed in the Fish Barrier. That will happen with ponding water. We experienced it all over Spring Grove while it was filling up. I think it is duck weed. It seems to die away in the winter months. There is not much you can do about it but will let you know what more I find out about it. See attached I think this is it. Kind Regards Ryan Phelan	N		Fish Barrier reinstatement
1051	09-Jun-14	Peter Kidd	Hi Katie, I would like to add my voice concerning the road at the lower Loteni turnoff. I refer you back to your email on Monday, 12/9/2013 where you were aware of the concerns about that section. Since	Gavin Elliott	09-Jun-14	Thanks peter; noted.	N		Inchbrakie-Vaalekop South Road rehab

Issue No.	Date submitted	Submitted by (name)	Description of Issue	Issue reported to (name)	Date reported	Response to Issue	Resolved and Communicated	SM memo/notes regarding status of resolution	Relevant action category
			then many hundred huge fully loaded construction vehicles have used that section, and it has deteriorated. I had suggested concrete strips earlier on in the year, before the heavy vehicles compromised the substrate. This section won't last very long. I feel this must now be addressed, after all, we did allow use of this servitude in good faith. Kind regards, Peter						
1052	10-Jun-14	Mary Lund	Dear Katie, I would like to make a couple of formal complaints. 1. We still do not have a permanent surface on the road on the steep section at the entrance to our property. I took the matter up with Peet the last time we had a meeting on site and he agreed that the rap laid down was not of good quality. He specifically instructed Gavin to go ahead and put a better surface on the steep section. 2. As far as I know we still do not have a signed servitude agreement. I was really under the impression that part of the terms of conditions of access via our road was that this would be sorted out for us and we have not heard anything about it for months. 3. Work has not yet finished on the weir. I know that we have been promised that our concerns will be addressed re vehicles crossing the river but if the complaints register is no longer open how will we complain if this does not happen? Would it be possible for you to forward details of whoever is	Gavin Elliott, Ryan Phelan	10-Jun-14	17 June 2014: Dear Mary, Sorry to be responding a week after your e-mail. 1. I'm assuming that you mean that steep section straight off the tar road, or do you mean that RAP on your property? Gavin and I drove both roads last week, and Gavin's very happy with the RAP on your property, but wants to give the RAP on the steep section through the avenue of trees a bit more of a chance to bind over the next couple of months. I'll do a more detailed response about this particular issue and send to everyone who uses that road. 2. I've chatted to Mike Forsyth, and the servitude agreement is ready, bar the SG diagram that is being prepared by Peter Newmarch/Russell Wheeler, to be signed. They're doing the diagrams for all of the properties, to be reflected on title deeds, so it's a rather protracted process. Either Mike or I will send you an update when we hear something. 3. You're correct, work hasn't finished. We still have your list of concerns, and the plans to address them remain the same. The complaints register is still open throughout G5's liability period, the construction component of which ends in October this year, and the environment component in March 2015. Just send me a mail! If you have title deed queries you could contact Russell Wheeler (rwheeler@wol.co.za) or Kogi (Knaidoo@tcta.co.za). I'm not really sure who is dealing with it in TCTA's legal department, but Kogi is the best	N		Fish Barrier rehab

Issue No.	Date submitted	Submitted by (name)	Description of Issue	Issue reported to (name)	Date reported	Response to Issue	Resolved and Communicated	SM memo/notes regarding status of resolution	Relevant action category
			responsible finalising our Title Deeds. I have not heard from anyone and am a little nervous that they proceed without informing us. As our access facility on the loan will be frozen we need some warning! Many thanks, Mary			person to direct any TCTA-related questions to. Kind regards, Katie			
1053	18-Jun-14	Chris King	Dear Katie, You said that someone was going to be looking at the slope leading from the tar road to Clive Garlick's new entrance. I have heard nothing since. Meanwhile the surface deteriorates and is in an appalling condition. Kind regards, Chris	Gavin Elliott, Ryan Phelan	18-Jun-14	Thanks Chris, it's on our agenda but we're waiting for the right decision-makers to respond.	N		